

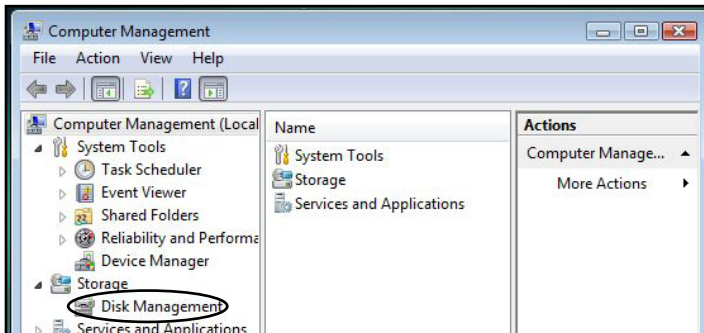
Your new Glyph drive has been formatted for the Mac. To use the drive with your Windows system, you'll need to format your hard disk for Windows.



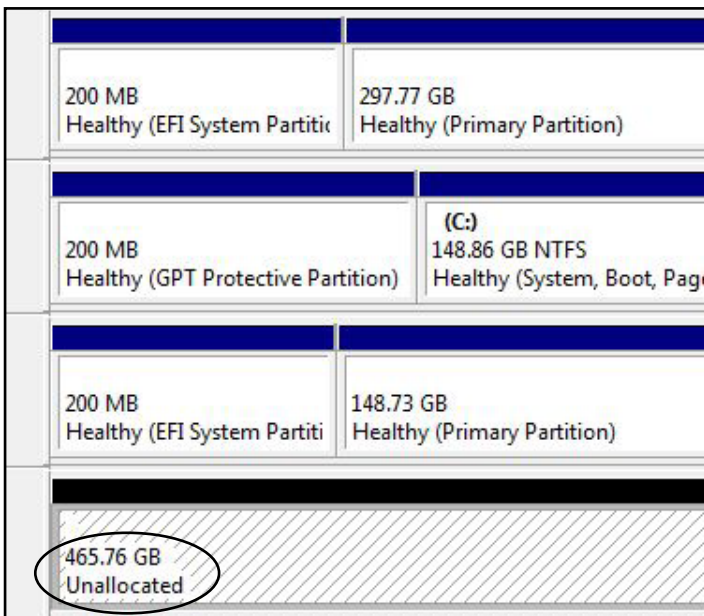
1. On the desktop, right-click on **Computer**, and select **Manage** from the menu. This will bring you to **Computer Management**. Or you can go to the **Start Menu > Control Panels > Administrative Tools > Computer Management**.

2. A message will prompt you that Windows needs permission to continue, click continue.

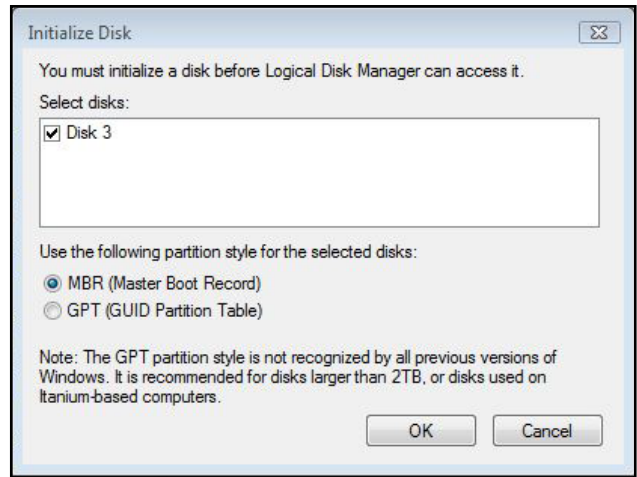
3. Click on **Disk Management**.



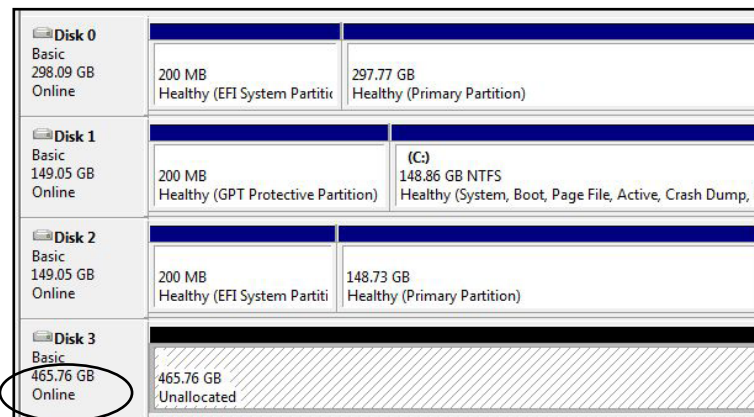
4. Next you'll see a list of drives the lower right panel of the screen. The new drive should be listed there and should have "Unallocated" on the right, and "Not initialized" in the left panel. In the example below, there are three internal drives and the new drive is listed at the bottom.



5. Right-click on the left portion that reads "Not initialized", and click **Initialize Disk**. Use the default settings and click **OK**.



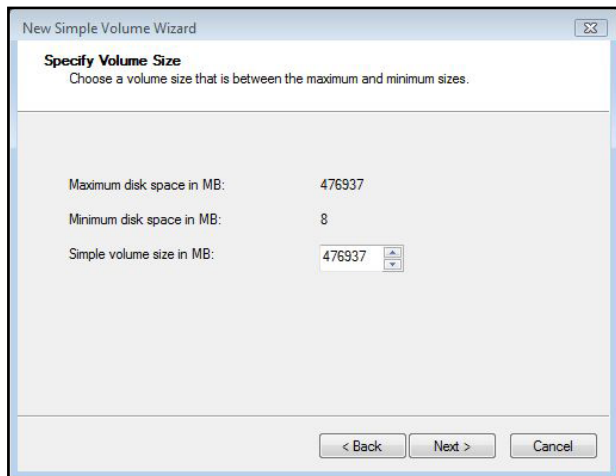
6. It will now report to be Online on the left.



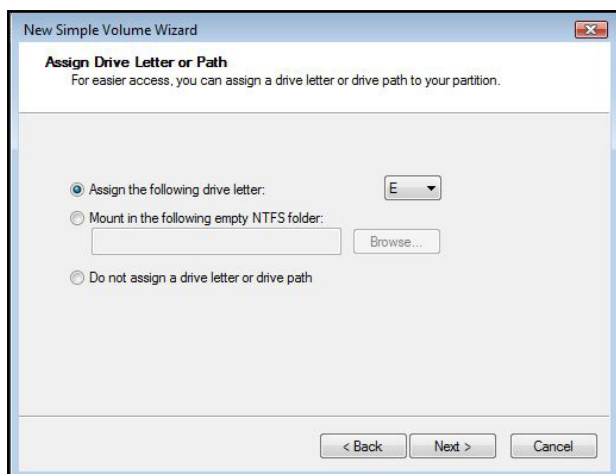
7. Right-click on the portion that says **Unallocated**, and choose **New Simple Volume**. When the Wizard appears, click **Next**.



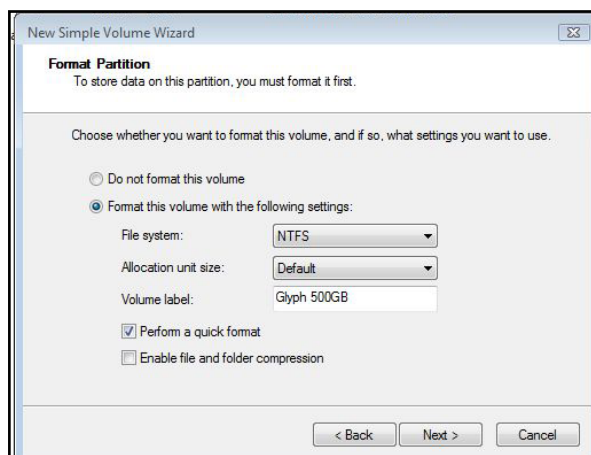
8. Specify the size of the volume. If you leave it default, it will create one large volume.



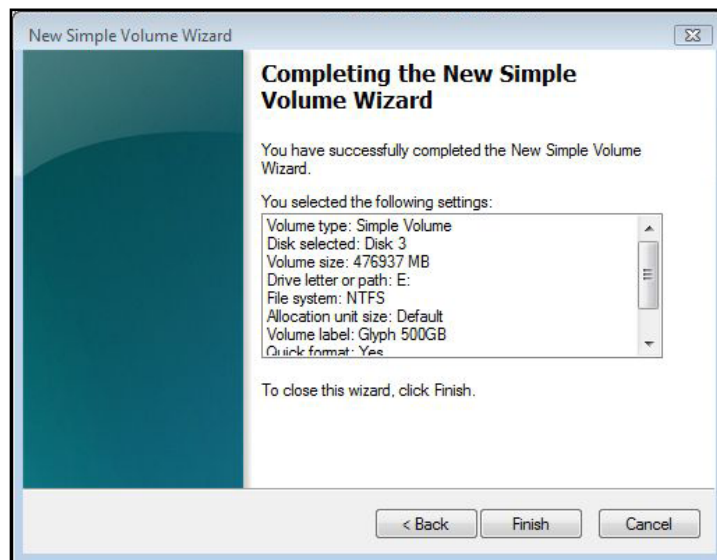
9. In Windows Vista, it is necessary to Assign a drive letter. Windows will pick the next available one.



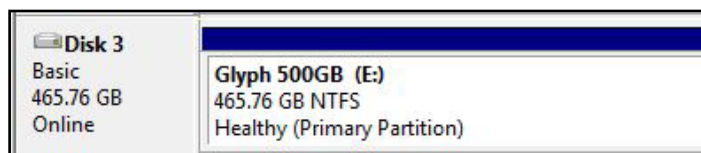
10. Select the file system, NTFS is recommended for Windows XP and Vista. Select a Quick Format. You can also name the drive here.



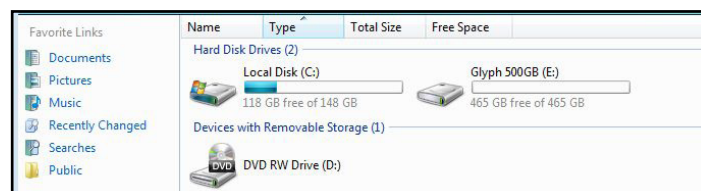
11. Verify your settings and click Finish to perform the format.



12. It will take a few seconds to format your drive, then it will appear as a healthy volume.



13. Now you should check in Computer to make sure your new drive shows up.



You're done!